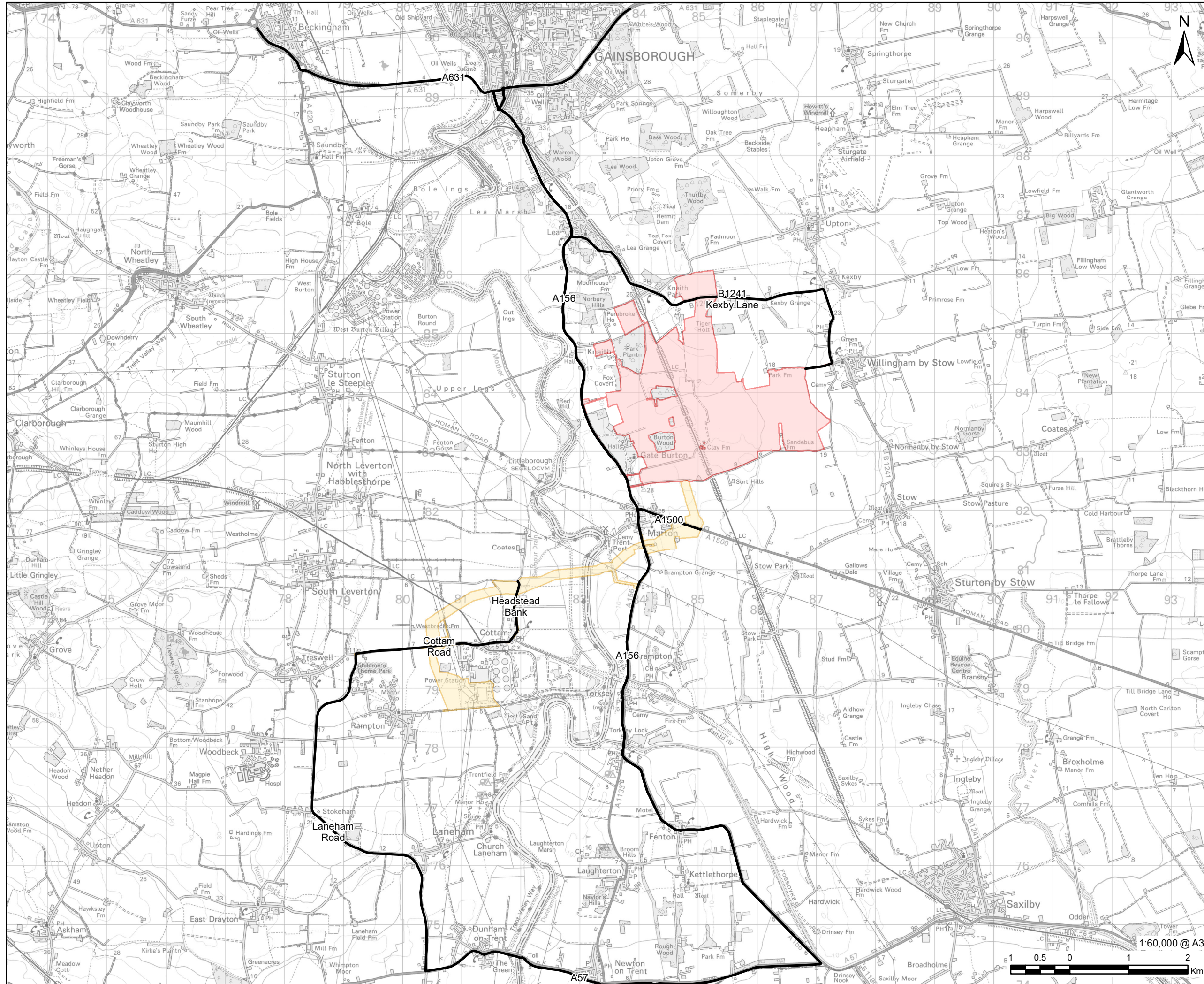


Revision: 01 Drawn: VC Checked: MW Approved: WB Date: 2022-11-23
Filename: i:\na.aecom.com\ms\EMEACroydon\UKGRD1\Legacy\UKCRD1\F001-V1\IE\projects\general\GIS\Projects\Gate Burton Energy Park\K02_Maps\Environmental Statement\Chapter 13 - Transport\PT_ES_Figure13_3_HGVRoute.mxd






PROJECT
Gate Burton Energy Park

CLIENT

Gate Burton
ENERGY PARK

CONSULTANT
AECOM Limited
Sunley House
4 Bedford Park
Surrey, CR0 2AP, UK
www.aecom.com

LEGEND
 Solar and Energy Storage Park
 Grid Connection Corridor
 HGV Route

NOTES
© Crown copyright and database rights 2022.
Ordnance Survey 0100031673. Contains
Ordnance Survey Data © Crown Copyright
and database right 2022.

ISSUE PURPOSE
Environmental Statement

PROJECT NUMBER
60664324

FIGURE TITLE
HGV Routing

FIGURE NUMBER
Figure 13-3

This drawing has been prepared for the use of AECOM's client. It may not be used, modified, reproduced or relied upon by third parties, except as agreed by AECOM or as required by law. AECOM accepts no responsibility, and denies any liability whatsoever, to any party that uses or relies on this drawing without AECOM's express written consent. Do not scale this document. All measurements must be obtained from the stated dimensions.